



Textile Flocked Flooring

flotex[®] colour



30 x 2 m



50 x 50 cm

creating better environments

Forbo

FLOORING SYSTEMS



flotex[®] colour

Elevate your space with style and unique performance

Incorporating Flotex into your design is more than just selecting a flooring solution; it's a choice to transform your space into a haven of both style and harmony. Flotex seamlessly combines aesthetics and functionality to create a flooring solution that's not only visually appealing but also exceptionally practical. Whether you're designing a hotel, a busy hallway, or a dynamic office environment, Flotex stands out as the ideal choice to enhance the comfort, durability, and overall ambience of your space.

When you choose Flotex, you're not just choosing a flooring; you're choosing a statement of style, and a solution which is easy to live with thanks to its special performance and durability. Explore the Flotex colour collection and experience the perfect synergy of form and function in your space.

The Flotex Colour collection is available in sheet and tiles, for endless installation possibilities.

DURABLE

- With the feel of a textile floor covering, together with the hard wearing and durable characteristics of a resilient floor. Flotex is the best of both worlds.
- Compared to a traditional carpet, the densely flocked surface of nylon 6.6. fibres brings higher durability, so that your vision of your space will last.

EASY TO CLEAN

- Premium quality nylon 6.6. fibres bring superior stain resistance and cleanability.
- Unlike traditional carpet the unique construction of densely flocked straight pile allows stains to effortlessly release in any cleaning action in both dry and wet conditions.

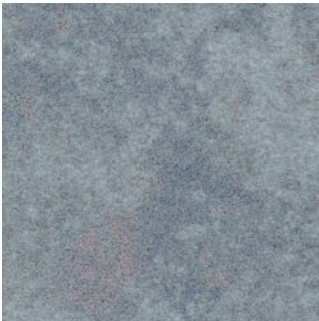
HYGIENE AND INDOOR AIR QUALITY

- The 80 million vertical fibres of Flotex capture and hold fine dust and allergens which can then be released by simply vacuuming.
- The waterproof backing of Flotex forms a barrier so that spillages cannot penetrate to the sub-floor. This limits the possibility of bacterial growth, mould and odours.
- Contributing to better indoor air quality, Flotex is the only textile floor covering which carries the seal of approval from the British Allergy Foundation.

ACOUSTIC AND SAFE

- Thanks to both its impact sound reduction and sound absorption performance, Flotex brings a quiet atmosphere, reduces stress, boosts concentration and creates peaceful environments in any spaces.
- Flotex has a good slip resistance reducing the risk of accidents or injuries in wet or dry conditions so that spaces are safe places for people.





calgary | carbon
s290019 t590019

LRV 18%
◐



calgary | cement
s290012 t590012

LRV 13%
○

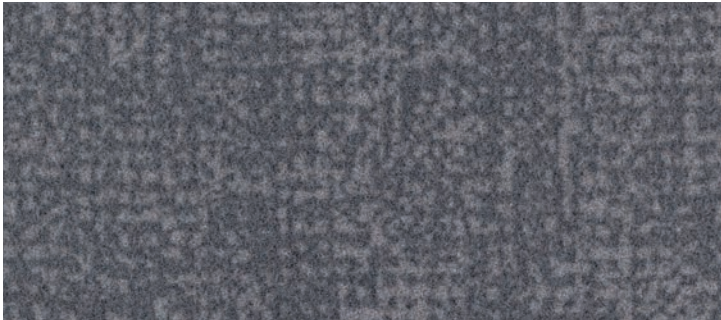


s482005 | penang smoke **s482031** | penang ash



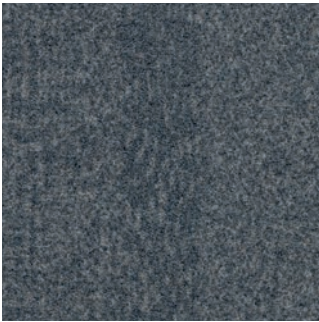
calgary | quartz
s290011 t590011

LRV 28%
◐



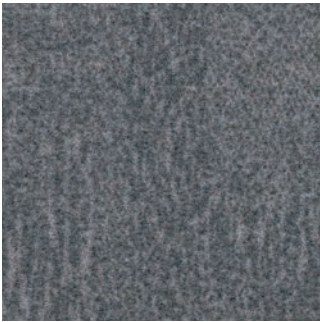
metro | nimbus
s246005 t546005

LRV 13%
○



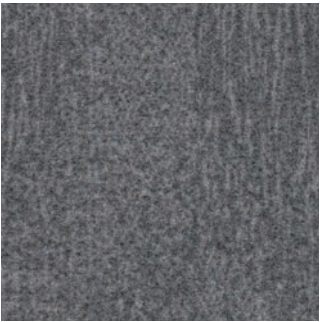
penang | mercury
s482004 t382004

LRV 10%
○



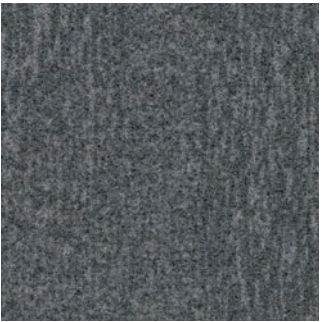
penang | smoke
s482005 t382005

LRV 14%
○



penang | nimbus
s482017 t382017

LRV 14%
○



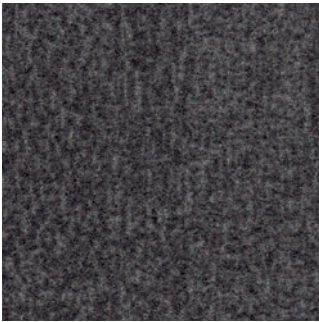
penang | zinc
s482007 t382007

LRV 9%
◐



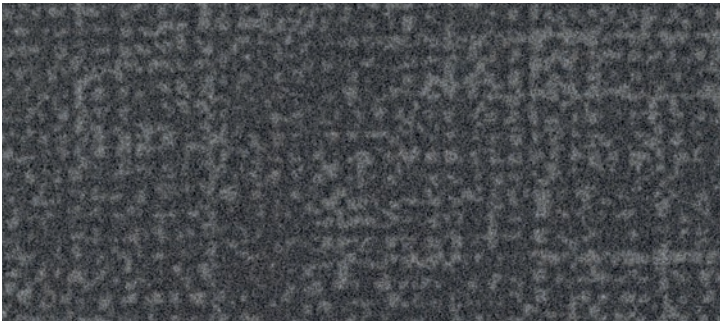
calgary | espresso
s290023 t590023

LRV 15%
◐



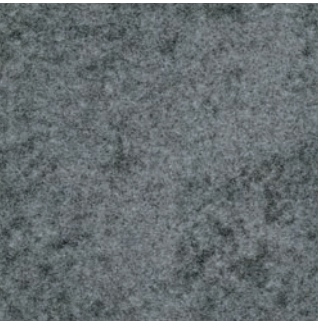
penang | grey
s482037 t382037

LRV 10%
○



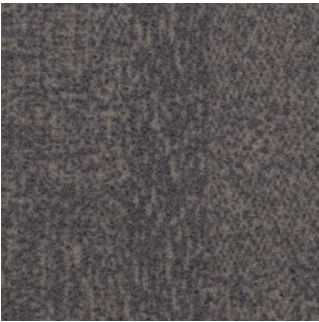
metro | grey
s246006 t546006

LRV 8%
○



calgary | grey
s290002 t590002

LRV 8%
○



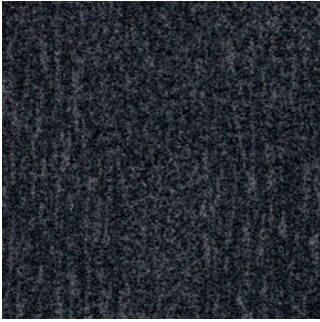
penang | shale
s482020 t382020

LRV 10%
○



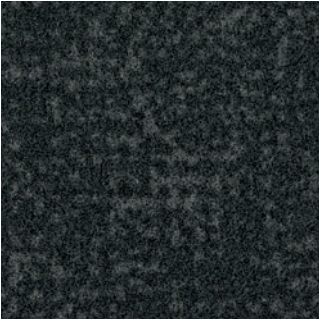
metro | anthracite
s246008 t546008

LRV 3%
○



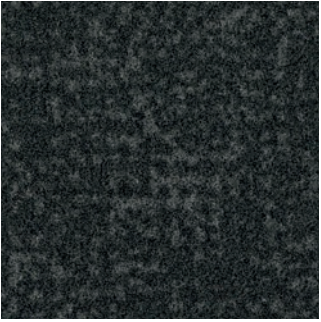
penang | anthracite
s482001 t382001

LRV 3%
○



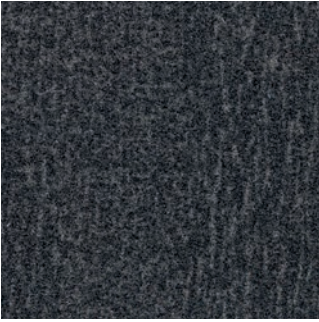
metro | ash
s246007 t546007

LRV 4%
○



calgary | ash
s290010 t590010


LRV 4%
○



penang | ash
s482031 t382031

LRV 5%
○

s = sheet

s =  30 x 2 meters

t = tiles

t =  50 x 50 cm

○ = superior
appearance
rating

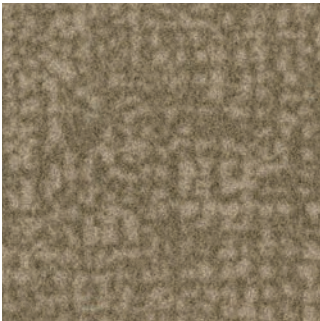
◐ = good
appearance
rating

● = moderate
appearance
rating



penang | bamboo
s482018 t382018 ○

LRV 21%



metro | sand
s246012 t546012 ◐

LRV 18%

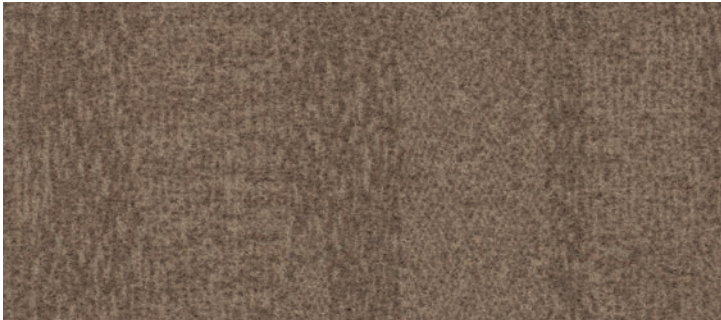


s246011 | metro pebble **s246017** | metro berry



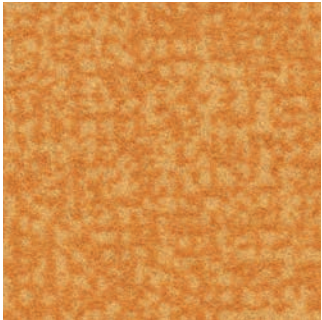
calgary | sahara
s290006 t590006 ◐

LRV 29%



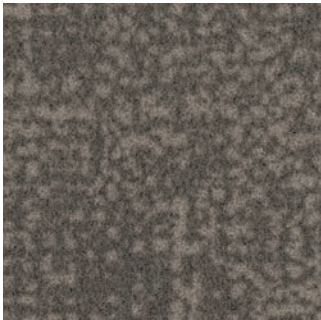
penang | flax
s482075 t382075 ○

LRV 15%



metro | gold
s246036 t546036 ◐

LRV 29%



metro | pebble
s246011 t546011 ○

LRV 14%



penang | beige
s482015 t382015 ○

LRV 12%



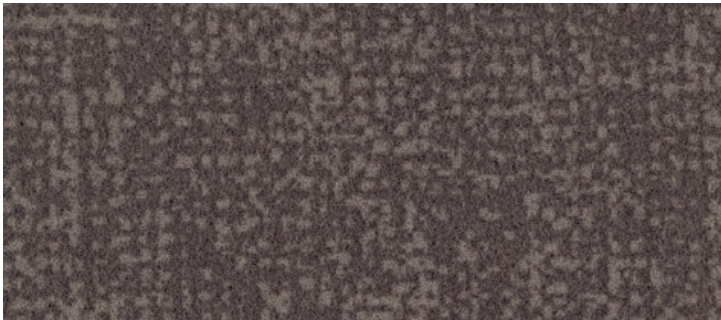
penang | coral
s482016 t382016 ◐

LRV 16%



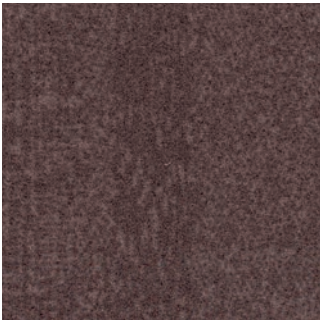
calgary | melon
s290005 t590005 ○

LRV 10%



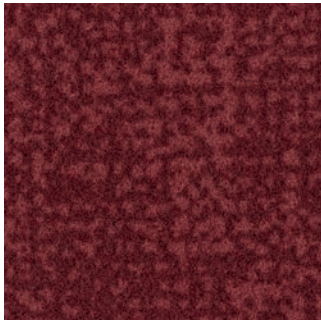
metro | pepper
s246009 t546009 ○

LRV 9%



penang | dusk
s482023 t382023 ○

LRV 8%



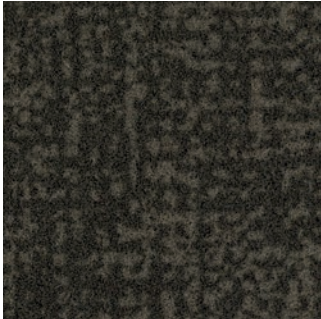
metro | berry
s246017 t546017 ○

LRV 5%



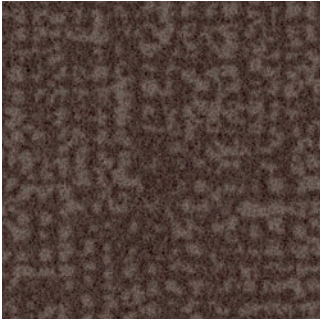
calgary | fire
s290024 t590024 ○

LRV 11%



metro | concrete
s246014 t546014 ○

LRV 4%



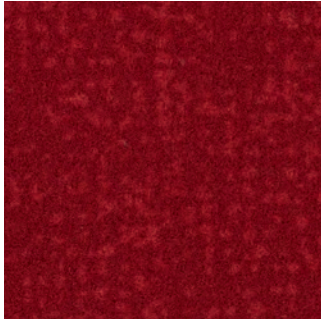
metro | cocoa
s246015 t546015 ○

LRV 7%



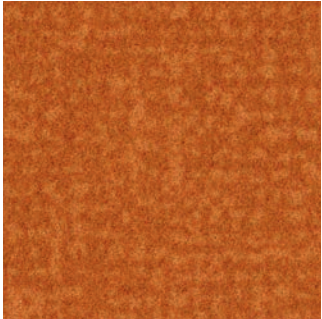
metro | chocolate
s246010 t546010 ○

LRV 3%



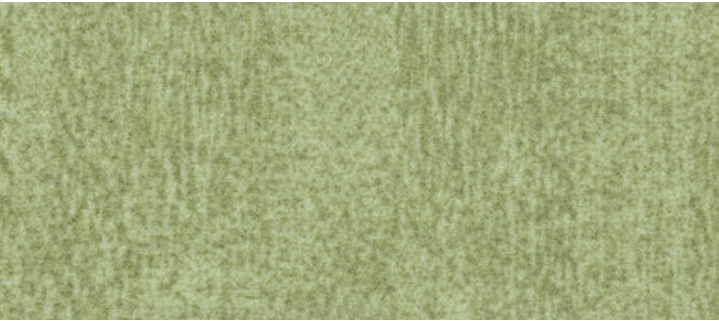
metro | red
s246026 t546026 ○

LRV 9%



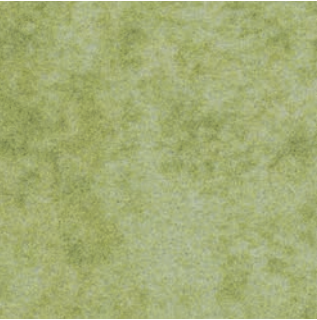
metro | tangerine
s246025 t546025 ◐

LRV 17%



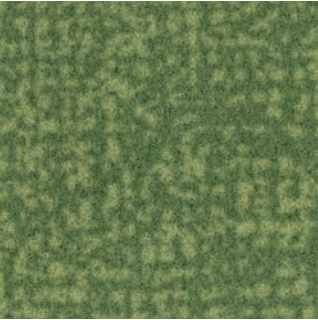
penang | sage
s482006 t382006

LRV 35%
◐



calgary | lime
s290014 t590014

LRV 36%
◐

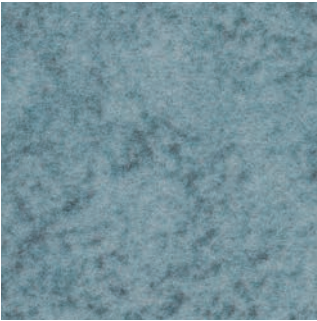


metro | citrus
s246019 t546019

LRV 18%
◐

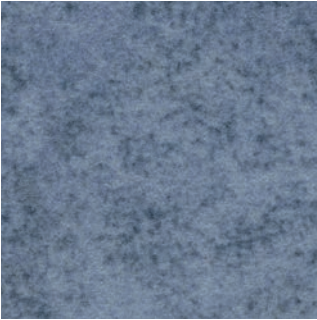


s246018 | metro mineral



calgary | aqua
s290021 t590021

LRV 29%
◐



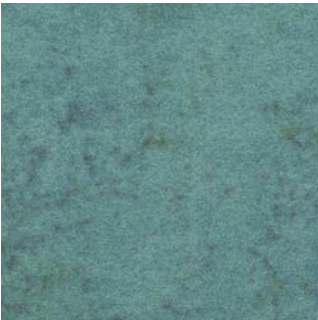
calgary | riviera
s290025 t590025

LRV 16%
◐



metro | apple
s246037 t546037

LRV 15%
○



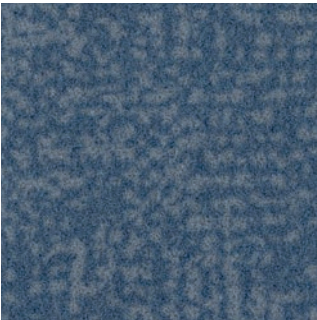
calgary | menthol
s290004 t590004

LRV 17%
◐



metro | mineral
s246018 t546018

LRV 15%
◐



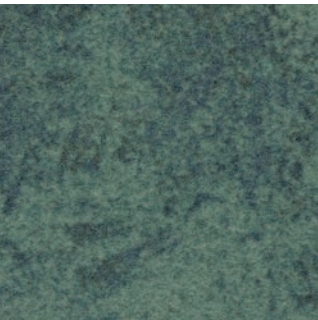
metro | gull
s246004 t546004

LRV 11%
○



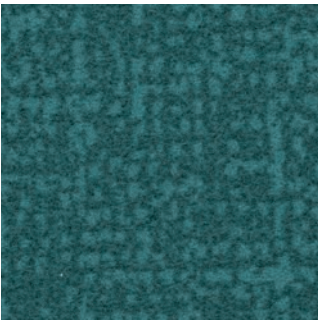
penang | evergreen
s482010 t382010

LRV 7%
○



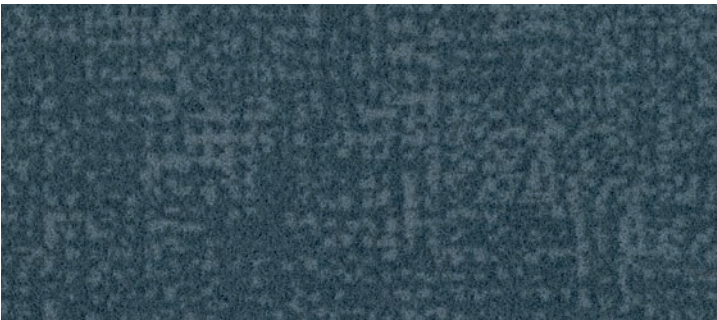
calgary | moss
s290009 t590009

LRV 13%
○



metro | jade
s246028 t546028

LRV 7%
○



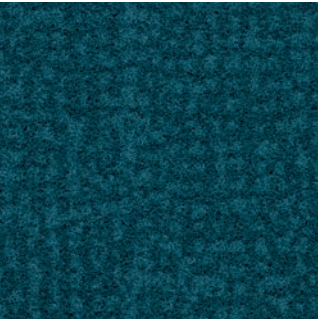
metro | tempest
s246002 t546002

LRV 7%
○



metro | evergreen
s246022 t546022

LRV 6%
○



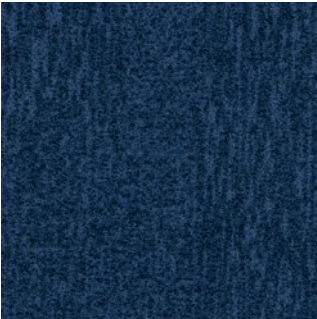
metro | petrol
s246032 t546032

LRV 4%
○



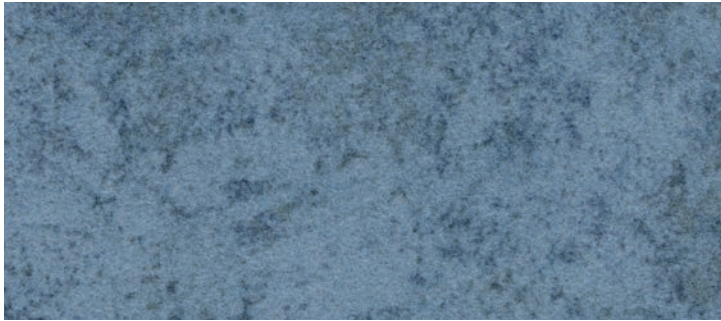
metro | carbon
s246024 t546024

LRV 5%
○



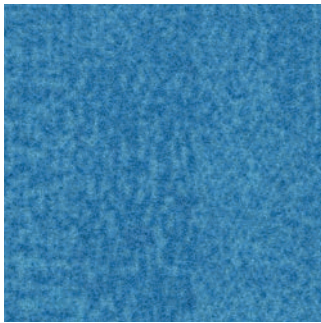
penang | azure
s482116 t382116

LRV 4%
○



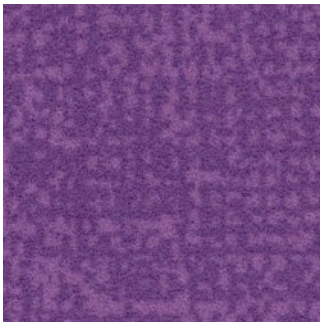
calgary | sky
s290001 t590001

LRV 15%
◐



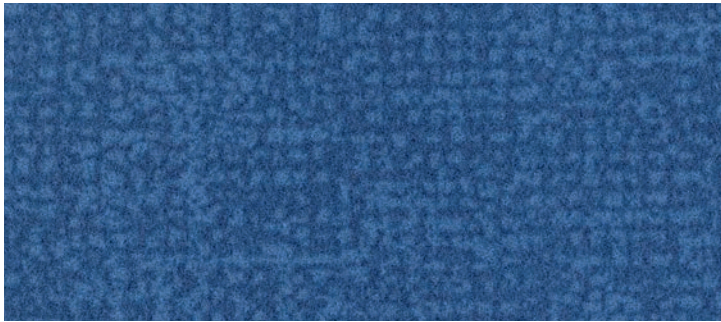
penang | sapphire
s482011 t382011

LRV 17%
◐



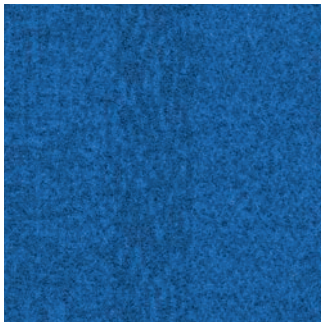
metro | lilac
s246034 t546034

LRV 9%
○



metro | lagoon
s246020 t546020

LRV 10%
◐



penang | neptune
s482026 t382026

LRV 10%
◐



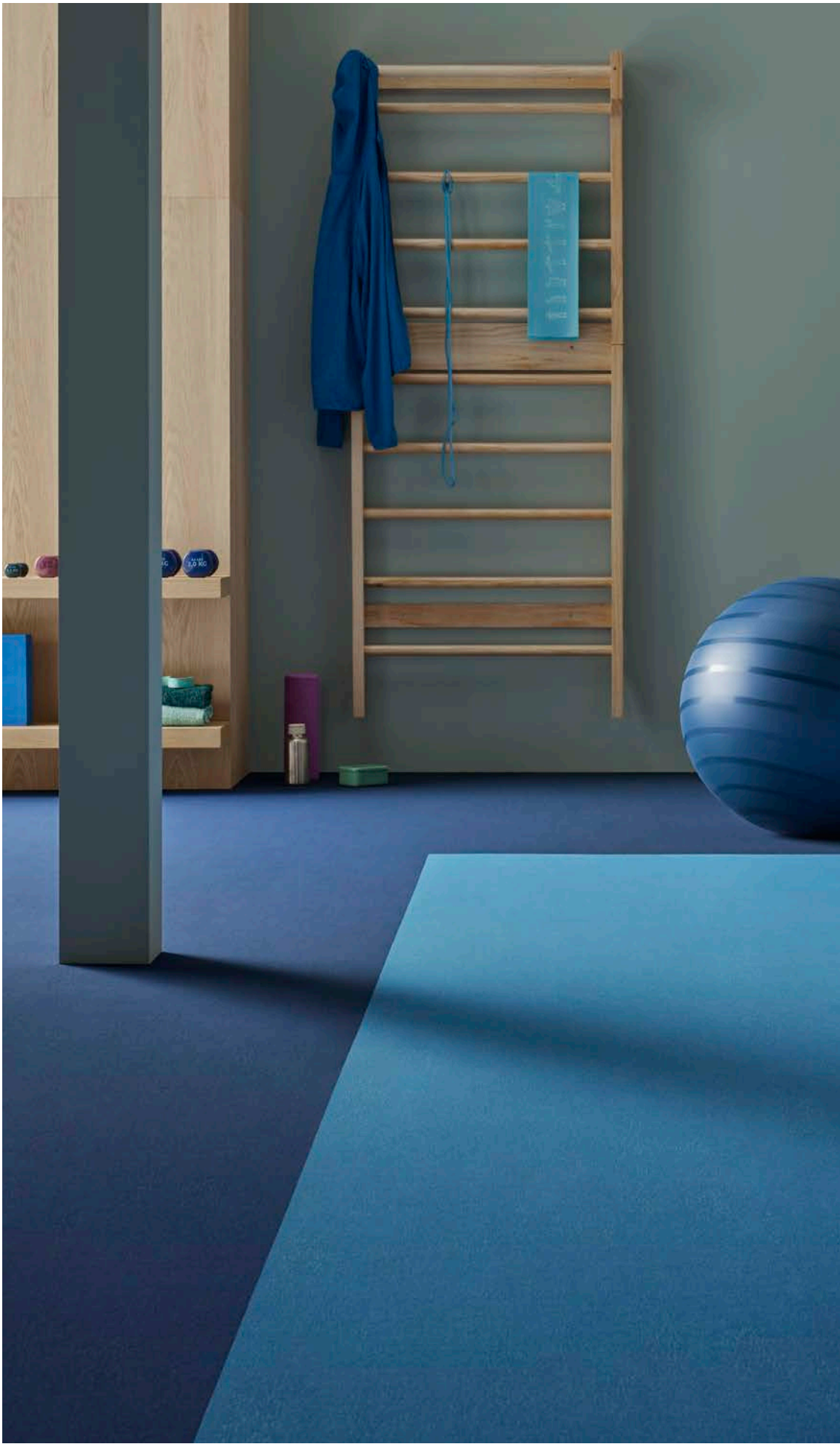
calgary | azure
s290015 t590015

LRV 4%
○



metro | indigo
s246001 t546001

LRV 3%
○



s482116 | penang azure s482011 | penang sapphire



Technical specifications

Flotex sheet & tiles meet the requirements of EN 1307



			Flotex colour sheet	Flotex colour tile	Flotex borders
	Total thickness	ISO 1765	4.3 mm	5.0 mm	4.3 mm
	Total weight	ISO 8543	1,800 g/m²	4,800 g/m²	1,800 g/m²
	Pile composition		100% polyamide 6.6	100% polyamide 6.6	100% polyamide 6.6
	Commercial use	EN-ISO 10874	Class 33	Class 33	Class 33
	Sheet roll width		2.0 m	–	11 cm or 22 cm
	Sheet roll length		± 30 m	–	15 m
	Tile size		–	50 x 50 cm	–
	Packaging per carton tiles		–	12 (3 m³)	–
	Dimension stability	ISO 2551 / EN 986	≤ 0.2%	≤ 0.1%	≤ 0.2%
	Abrasion resistance	EN 1307 annex F	> 1000 cycles	> 1000 cycles	> 1000 cycles
	Castor chair continuous use	ISO 4918	r ≥ 2.4	r ≥ 2.4	r ≥ 2.4
	Colour fastness to light	EN-ISO 105-B02	≥ 6	≥ 6	≥ 6
	Slip resistance	BS 7976-2 (UK SRG pendulum)	Dry - low slip risk Wet - low slip risk	Dry - low slip risk Wet - low slip risk	Dry - low slip risk Wet - low slip risk
	Acoustic impact noise reduction	EN-ISO 717-2	ΔL _w ≥ 21 dB	ΔL _w ≥ 19 dB	ΔL _w ≥ 21dB
	Acoustic sound absorption	ISO 354	α _w = 0.10 (H)	α _w = 0.10 (H)	α _w = 0.10 (H)
	Water impermeability	EN 1307 annex G	Pass	Pass	Pass
	Creating Better Environments				
	Renewable electricity	Flotex is manufactured using 100% electricity made from renewable sources.			
	Recycled content	Flotex sheet contains up to 20% recycled content by weight. Flotex tile contains up to 59% recycled content by weight.			
	Indoor air quality	Flotex is approved by Allergy UK. All Flotex products are tested for indoor air emissions in accordance with EN 16516 after 3 days and 28 days. Flotex sheet has ultra low emissions.			
	Indoor Emissions: TVOC after 28 days	EN 16516	≤ 0.1 mg/m³	≤ 0.1 mg/m³	≤ 0.1 mg/m³
	SKA	Flotex meets SKA Rating criteria for M12 for soft floor coverings in office, retail and higher education schemes.			
	LCA	Life Cycle Assessment is the foundation for securing the lowest environmental impact.			
			EN 14041:2004 	EN 14041:2004 	EN 14041:2004
	Flotex meets the requirements of EN 14041:2004		1200101- DoP -012	1200201- DoP -101	1200101- DoP -012
			BS EN 14041:2004 	BS EN 14041:2004 	BS EN 14041:2004
	Great Britain Only Flotex meets the requirements of BS EN 14041:2004		1200101- DoP -GB108	1200201- DoP -GB108	1200101- DoP -GB108
	Reaction to fire	EN 13501-1	B _{fl} -s1, L, NCS	B _{fl} -s1, L, CS	B _{fl} -s1, L, NCS
	Slip resistance	EN 13893	μ ≥ 0.30	μ ≥ 0.30	μ ≥ 0.30
	Body voltage	ISO 6356	≤ 2.0 kV	≤ 2.0 kV	≤ 2.0 kV
	Thermal conductivity	EN 12524	0.06 W/mK	0.06 W/mK	0.06 W/mK
	Content of specific dangerous substances	EN 14041	Compliant	Compliant	Compliant

Our recommended adhesive for Flotex Sheet is 640 Eurostar Special. Our recommended tackifier for Flotex tiles is 542 eurofix tack plus. Please contact customer services for more information. All Forbo Flooring Systems' sales organisations worldwide have a certified Quality Management System in accordance with ISO 9001. All Forbo Flooring Systems' manufacturing operations have a certified Environmental Management System in accordance with ISO 14001. The Life Cycle Assessment (LCA) of Forbo Flooring Systems' products is documented in individual Environmental Product Declarations (EPD's) which can be found on all of our websites.



Find us on



Belgium

Forbo Flooring
't Hofveld 4B 001
1702 Groot-Bijgaarden
Tel: +32 2 464 10 10
Fax: +32 2 464 10 11
info.belgium@forbo.com
www.forbo-flooring.be

Norway

Forbo Flooring A/S
Hagalokkveien 7
1383 Asker
T +66 77 12 00
F +66 77 12 40
info.norway@forbo.com
www.forbo-flooring.no

Other Countries

Forbo Flooring B.V.
P.O. Box 13
1560 AA Krommenie
The Netherlands
T: +31 75 647 74 77
E-mail: question@forbo.com
www.forbo-flooring.com



FLOORING SYSTEMS

creating better environments